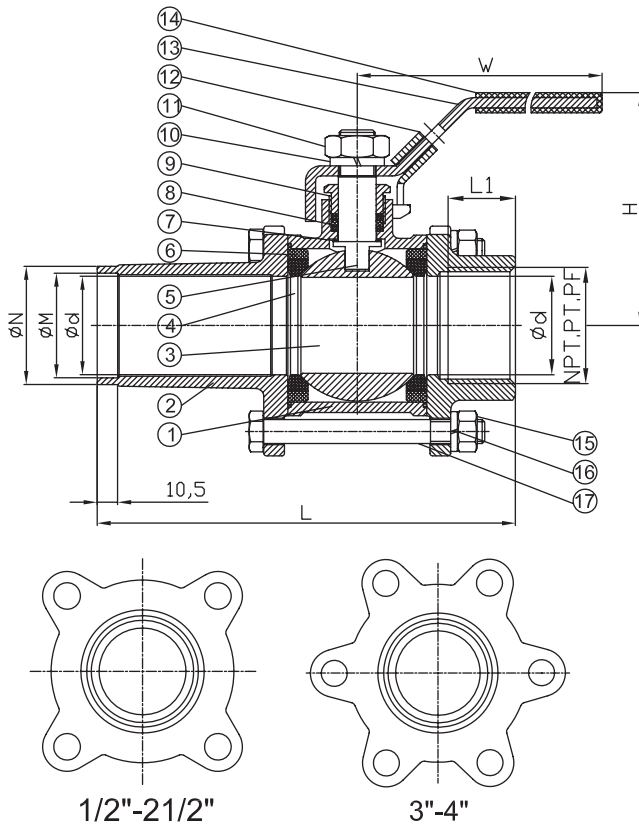


BALL VALVES

KLINGER KHD-3-SL/G-XC/RPTFE
 Long welding end / threaded end, full bore
 PN50 / CL300



PARTS

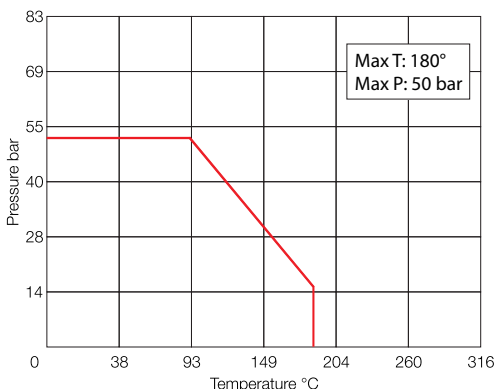
No.	Part	Material
1	Body	CF8M
2	End cap	CF8M
3	Ball	CF8M
4	Ball seat	R.PTFE*
5	Stem	AISI 316
6	Body Seal	PTFE
7	Thrust packing	PTFE
8	Stem packing	PTFE
9	Stem gland	AISI 304
10	Spring washer	AISI 304
11	Stem nut	AISI 304
12	Locking device	AISI 304
13	Handle	AISI 304
14	Sleeve	Vinyl
15	Spring washer	AISI 304
16	Nut	AISI 304
17	Bolt	AISI 304

* 15% glass fibre

DIMENSIONS AND WEIGHTS

DN	PN	d	L	L1	H	W	M	N	kg
10	50	12,7	142,5	10	54	102	15,2	17,2	0,5
15	50	15	144,5	11,5	62	123	17,8	21,0	0,6
20	50	20	148,0	13,0	66	123	23,0	27,0	0,8
25	50	25	163,5	14,5	77	153	28,5	33,7	1,2
32	50	32	176,0	17,0	80	153	37,2	42,2	1,7
40	50	38	184,5	17,0	91	183	43,0	48,4	2,4
50	50	50	200,0	21,5	98	183	54,0	61,0	3,7
65	50	65	248,0	23,5	138	246	70,0	77,0	7,4
80	50	80	264,5	26,5	154	246	82,0	90,0	10,8
100	50	100	281,0	32,5	175	350	106,0	115,0	18,3

MAX. TEMPERATURE / PRESSURE



STANDARDS AND CERTIFICATION

- » PED 2014/68/EU
- » Pressure test EN 12266-1, API 598
- » EN 10204 Certificate (3.1)

APPLICATIONS

For general use. Not for abrasive or crystallizing media.